



PSB Industries Inc.

General Air Division

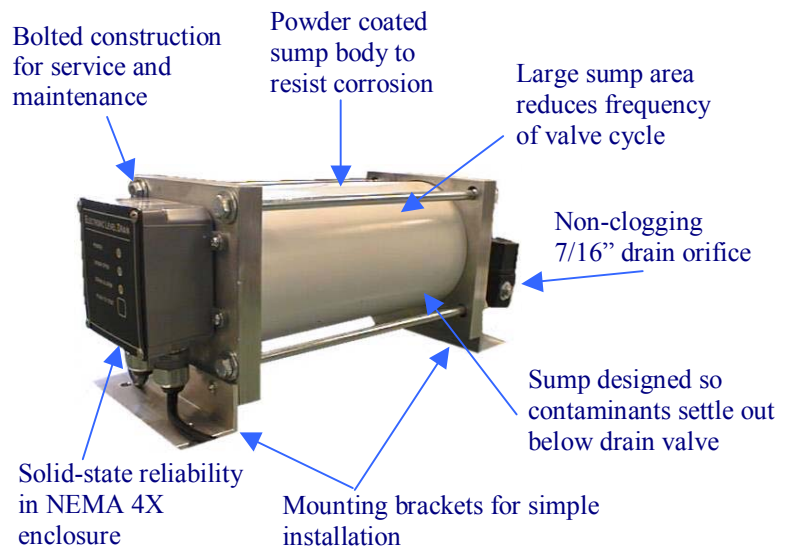
Zero Loss Drains

- No compressed air loss
- Saves energy
- “On Demand” operation
- Low maintenance



- Floor mounted
- Push button test mode
- Drain alarm
- Remote alarm contact

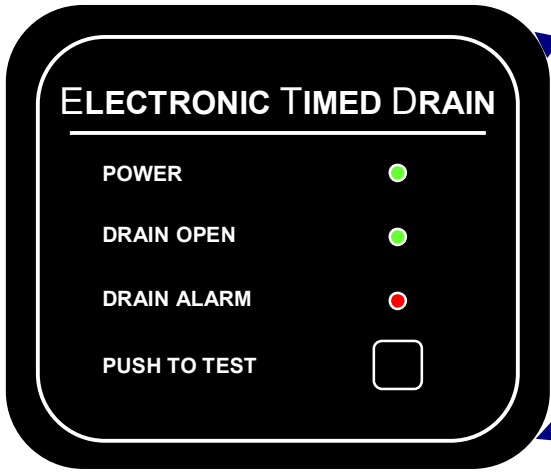
The ZLD is designed to reliably discharge condensate while preventing the loss of valuable compressed air. Rising condensate in the sump actuates a mechanical float switch operating the drain valve. The drain valve remains open until the sump is empty. The ZLD only discharges condensate. No compressed air is wasted. Positive pressure from the compressed air system forces the condensate out of the sump. The mechanical float is time proven, reliable and non-fouling. The sealed switch is not affected by water, dirt or oil. The sump is designed so that contaminants settle out below the drain valve to prevent fouling. The ZLD is virtually trouble free, energy efficient and easy to operate. A ZLD should be installed at any condensate collection point in your compressed air system.



ZLD Technical Data		
PSB Part Number	71034-301	71034-300
Model	ZLD-38	ZLD-50
Inlet Connection	3/4" NPT	3/4" NPT
Outlet Connection	3/8" NPT	1/2" NPT
Drain Orifice Size	7/16"	
Cycle Time	On Demand	
Open Time	On Demand	
Operating Pressure	10 to 150 psig	
Operating Temperature	35 to 150°F	
Water Displacement	9 gpm @ 100 psi	16 gpm @ 100 psi
Condensate Holding Capacity	0.42 gal	0.66 gal
Electrical	115v/1ph/50-60hz	
Enclosure	NEMA 4X	
Alarm Contact	N.O. or N.C. (Form C)	
Dimensions, l x w x h	13" x 6" x 6"	17" x 6" x 6"
Shipping Weight	14 lbs.	17 lbs.

Operating Pressure (psig)	Model ZLD-38 Drain Capacity (gpm)	Model ZLD-50 Drain Capacity (gpm)
10	2.8	5.0
25	4.4	7.8
50	6.3	11.2
75	7.8	14.0
100	9.1	16.2
125	10.0	17.9
150	11.0	19.6





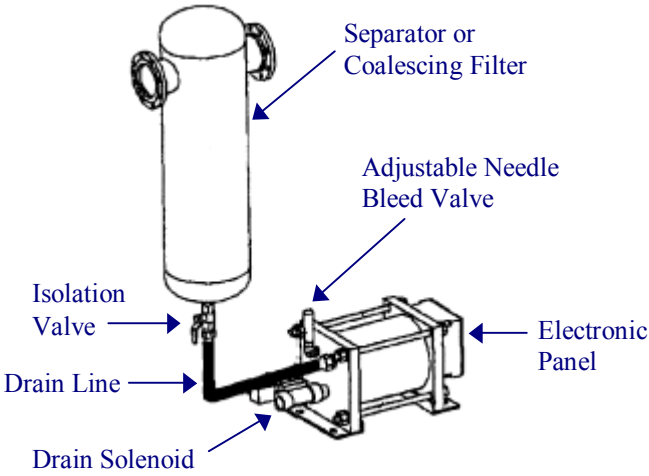
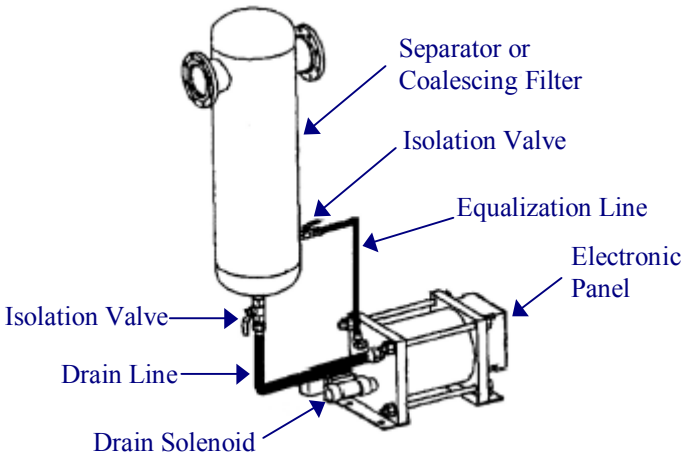
ZLD CONTROL



Typical Zero-loss Drain Installations

Installation with equalization line

Installation without equalization line



A balance line is necessary to allow air in the reservoir to be displaced as condensate enters. It should be tied in to the process air stream at a point of equal or slightly lower pressure.

If a balance line cannot be used an adjustable needle bleed valve may be used to bleed displaced air to atmosphere. This will result in a minimal amount of air loss.

Optional Installation Kit (PSB P/N 71034-302)

- 8 ft. x 1/2" flexible nylon drain tubing
- 8 ft. x 3/8" flexible nylon equalization tubing
- 4 quick connect tubing fittings
- 1/2" drain isolation ball valve
- 3/8" equalization line isolation ball valve

PSB INDUSTRIES INC.
General Air Division
 1202 West 12th Street • Erie, PA. USA
 Phone: 814-453-3651 • Fax: 814-454-3492
www.PSBINDUSTRIES.com